



BioContainment Infrastructure Services

CONTAINERISED ON-SITE LABORATORIES

Fit For Purpose

Providing the mining industry an on-site metallurgical process and/or assay laboratories during all phases of mining activities: **Exploration, Production and Reclamation.**

Plug & play: Supported with the required equipment during the life cycle of the specific mines activity.



www.fabrinnox.com
www.biolab.co.za

THE FUTURE OF MINING

Discover the future of mining with Fabrinor and Biocontainment Infrastructure Services (BIS). Our collaboration brings together Fabrinor's superior quality and cost-effective manufacturing solutions with BIS's innovative designs for rapid deployment modular containerised laboratories. This partnership offers a groundbreaking approach to implementing laboratory measurements in remote mining settings.

Our processes and services comply with ISO 9001 and ISO 3834 standards, ensuring consistent quality and reliability throughout production. Additionally, region-specific certifications, such as CE certification, are available to meet all client requirements.



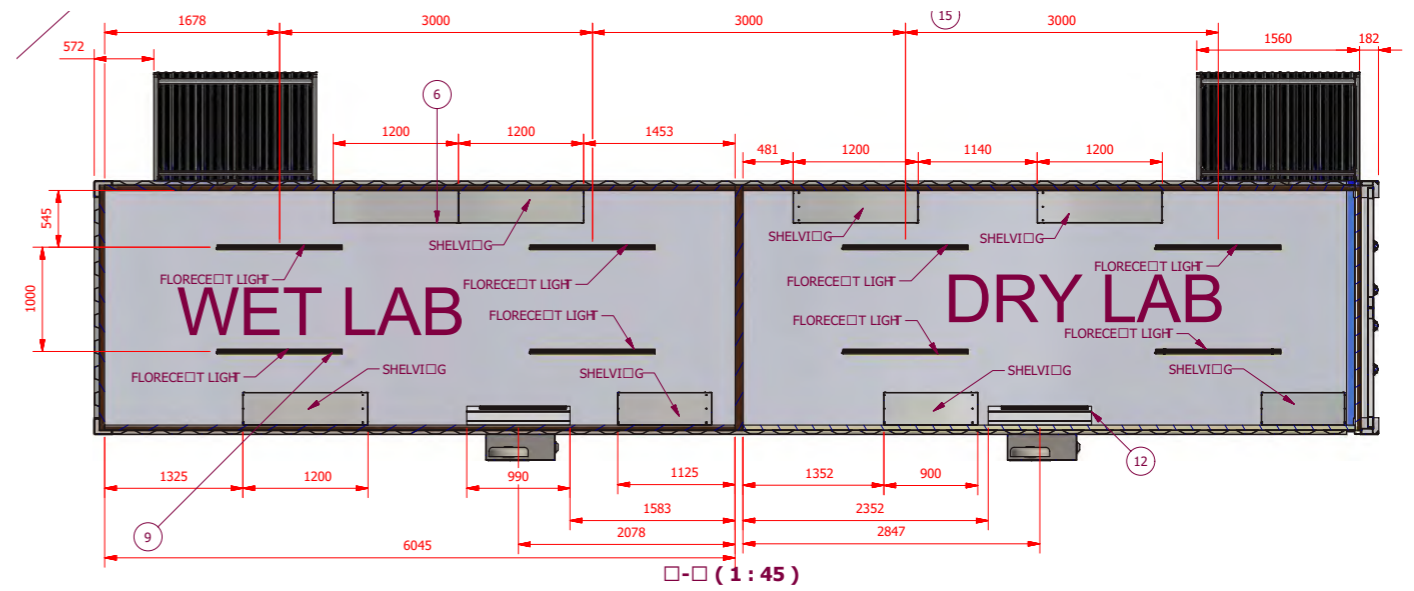
Explore the cutting-edge solutions we offer for the mining sector, designed to enhance efficiency and accuracy in laboratory measurements.

KEY BENEFITS

- » **Superior Quality:** High-standard manufacturing solutions by Fabrinor.
- » **Innovative Design:** BIS's modular laboratories for rapid deployment.
- » **Compliance:** Adherence to ISO 9001 and ISO 3834 standards.
- » **Certification:** Obtainable region-specific certifications, including CE.



THE DESIGN APPROACH



- Modular Containers - Environmentally insulated.
- Rugged and secure.
- Efficient workflow.
- Highly functional.

- Rapid deployable - worldwide.
- Predictable and Cost-effective solution.
- Engineered for optimum service cycle.

THE GENERAL FEATURES

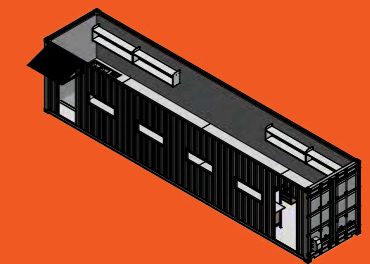
- Top quality Durable Shipping Containers
- Modular and Movable.
- Highly secure construction with supplementary security.
- 40-50mm Chromadek insulation.
- Durable 2.5mm flooring.
- Specified casework for experiment / research labs or alternative settings.
- Appropriate power supply configuration.
- Supply of suitable heat and cooling exchange systems.

Layouts of the laboratory are designed with the clients specific equipment to suit the logical flow through the lab Fire detection / telemetry monitoring systems.

THE APPLICATIONS

- Mining Laboratories - (Onsite Wet & Dry testing LABs).
- Remote Clinics.
- Storage facilities on site - off site.
- Secure Modular Offices.
- Hybrid Power supply systems.

All according to client specific requirements



THE UNDERTAKING

THE DUAL COLLABORATION AIMS TO:

- » Provide specified containerised facilities to meet the Clients objectives.
- » Provide secure business solutions for the required application, anywhere.
- » Clients' requirements shall be assessed by a team of experts to form a base line specification for production.
- » Interactive communication with Client on project status, advancements, until conclusion.



OUR HISTORY

BIS is owned and managed by Ingrid Terlouw, who has over 30 years of experience in the South African pathology sector. She played a crucial role in the rollout of the first containerized laboratories in South Africa's rural areas, part of the US President's Emergency Plan for AIDS Relief (PEPFAR) initiative to strengthen laboratory infrastructure in Africa. This success motivated BIS to expand into other industries, leading to a collaboration with Fabrinox to specifically target the **mining sector**.

Fabrinox is a proudly South African company based in the town of Paarl, with over 30 years of experience in the metal fabrication and manufacturing industry. We strive to offer our worldwide customer base innovative and tailor-made manufacturing solutions across 6 continents by adopting the latest manufacturing techniques and service solutions.



GET IN TOUCH



+27(0) 21 877 5000



andrev@fabrinox.com



www.fabrinox.com



Cnr Driebergen & Drommedaris Rds,
Charleston Hill, Paarl, 7645



BioContainment Infrastructure Services



+27 82 620 7339



ingrid@biolab.co.za



www.biolab.com



14 Partridge Crescent | Lady Blake Estate |
Wellington 7655 | South Africa